



SINUS & SKULL BASE SURGERY: ANATOMICAL DISSECTION, DIAGNOSTICS AND OPERATIVE TECHNIQUES

REGISTRATION

Enrollment is limited to 20 participants. For registering in a few simple step click on the following link:
<http://formazione.sigmainformatica.com/wfrm001.pgm?task=setCook&smurfid=&Azien1=58&Regio1=3>

Create an account or log in and the subscribe at the course page.
Find the course into the published list of courses and fill-in the on-line registration form.
Applications must be submitted within 30 days before the beginning of the course and will be accepted according to a chronological order.

Course fee: € 1.200,00

Course fee € 1.000,00 only for IAR and

A.I.C.NA Members
Course fee € 800,00 only for Residents

CME credits have been assigned by the Italian Ministry of Health. A final test is required to get the credits.

Registration fee includes:

- tuition
- coffee-breaks
- lunches
- gala dinner
- certificate of attendance

CANCELLATION POLICY

Cancellation received within the registration deadline (30 days before the beginning of the course): 80% refund. Cancellation received beyond the registration deadline: no refund. The name of the participant can be changed within one week prior to the course.

PAYMENT MODALITIES

Bank transfer to:

A.O. Ospedale di Circolo e Fondazione Macchi, Varese

Indicating:

causal DCS0316, name and surname edition participant.

Intesa Sanpaolo Bank branch Varese 2902 ;

IBAN : IT 27A030691081010000300010

Employees Public Entities - payment made directly by the Ente

Bank of Italy : IBAN : IT 77O0100003245138300306345

A confirmation will be sent after receipt of the application form and bank transfer.

ACCOMODATIONS & TRAVEL For additional information kindly contact us.

INSURANCE

Organizers do not accept responsibility for individual medical, travel or personal expenses. Registrants are strongly advised to take out their own personal insurance policies.

EVENT LOCATION

Department of Otorhinolaryngology
(4th floor)

Ospedale di Circolo e Fondazione Macchi

Polo Universitario

Via Guicciardini 9, 21100 Varese - Italy

With the support of:

STORZ
KARL STORZ – ENDOSKOPE

MIDA MEDICAL



SINUS & SKULL BASE SURGERY: ANATOMICAL DISSECTION, DIAGNOSTICS AND OPERATIVE TECHNIQUES

FACULTY / TUTORS

S. Balbi - Dept. Neurological Surgery Varese
F. Basilico - Dept. Otorhinolaryngology Varese
P. Battaglia - Dept. Otorhinolaryngology Varese
M. Bignami - Dept. Otorhinolaryngology Varese
A. Bolzoni Villaret - Dept. Otorhinolaryngology Brescia
M. Bonzini - Dept. Occupational Medicine Varese
F.R. Canevari - Dept. Otorhinolaryngology Alessandria
P. Carena - Dept. Otorhinolaryngology Pavia
P. Castelnuovo - Dept. Otorhinolaryngology Varese
I. Dallan - Dept. Otorhinolaryngology Pisa
F. De Bernardi - Dept. Otorhinolaryngology Varese
G. Di Giulio - Dept. Radiology Pavia
E. Emanuelli - Dept. Otorhinolaryngology Padova
C. Facco - Dept. Histopathology Varese
G. Frank - Dept. Neurological Surgery Napoli
N. Galante - Dept. Neurological Surgery Legnano
S. Gallo - Dept. Otorhinolaryngology Varese
R. Gera - Dept. Otorhinolaryngology Milano
P. Latorre - Dept. Otorhinolaryngology Varese
A. Leonardi - Dept. Radiology Varese
D. Locatelli - Dept. Neurological Surgery Legnano
D. Lombardi - Dept. Otorhinolaryngology Brescia
A. Macchi - Dept. Otorhinolaryngology Varese
A. Mercuri - Dept. Radiology Varese
M. Motta - Dept. Forensic Medicine Varese
P. Nicolai - Dept. Otorhinolaryngology Brescia
G. Padoan - Dept. Otorhinolaryngology Varese
F. Pagella - Dept. Otorhinolaryngology Pavia
P. Palma - Dept. Otorhinolaryngology Varese
E. Pasquini - Dept. Otorhinolaryngology Bologna
A. Pistochini - Dept. Otorhinolaryngology Varese
F. Pozzi - Dept. Neurological Surgery Varese
L. Sammarchi - Dept. Radiology Pavia
A. Tabano - Dept. Neurological Surgery Varese
M. Tavani - Dept. Forensic Medicine Varese
P. Terranova - Dept. Otorhinolaryngology Varese
M. Turri-Zanoni - Dept. Otorhinolaryngology Varese
L. Volpi - Dept. Otorhinolaryngology Varese



Scientific Secretariat

www.atingo-edu.it

informazioni@atingo-edu.it

Phone: +39 3773217150 Fax: +39 0332/1641148

Organizing Secretariat

www.ospedalivarese.net

Mrs. Sabrina Nascimbene

Staff Training Office A.O. Ospedale di Circolo and Fondazione Macchi, Polo Universitario

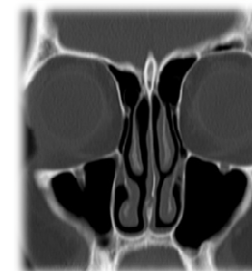
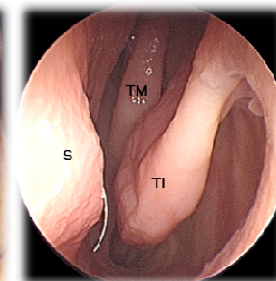
Phone: +39 0332/278457 Fax: +39 0332/278983



Ospedale
di Circolo
Fondazione
Macchi



S.S. Formazione del Personale: Responsabile D.ssa M.T. Aletti
Dipartimento Chirurgie Specialistiche: Direttore Prof. P. Castelnuovo
Dipartimento Biotecnologie e Scienze della Vita: Direttore Prof. G. Bernardini
Centro HNS&FDRc



SINUS & SKULL BASE SURGERY: ANATOMICAL DISSECTION, DIAGNOSTICS AND OPERATIVE TECHNIQUES

04-06 April 2016

Advanced Course *italian*

10-12 October 2016

Basic Course *english*

21-23 November 2016

Basic Course *italian*

Course director:
P. Castelnuovo



SINUS & SKULL BASE SURGERY: ANATOMICAL DISSECTION, DIAGNOSTICS AND OPERATIVE TECHNIQUES

INTRODUCTION

In the past years, endoscopic endonasal techniques underwent significant advances. Indeed, it is now possible to say that the nose and paranasal sinuses changed from just a potential site of various diseases to a natural surgical corridor toward hidden and deeper anatomical structures. Furthermore, the ability to resect and reconstruct skull base defects has dramatically improved, thus making endoscopic techniques a valuable tool for skull base surgeons. Given the ever expanding surgical options, a continuous improvement of anatomical knowledge is mandatory. However, thinking that the apex has already been reached would be erroneous.

For this reason, we designed a specific course where you will find the opportunity to attend classes of update on sinonasal pathology, specifically targeted on new diagnostic and surgical acquisitions.

The course includes a practical surgical training, which will be driven through operating sessions. The organization is residential with a daily basis (morning and afternoon) and with the constant presence of a tutor. Interaction with the faculty is facilitated by the small number of participants (max 20 members).

Paolo Castelnuevo



SINUS & SKULL BASE SURGERY: ANATOMICAL DISSECTION, DIAGNOSTICS AND OPERATIVE TECHNIQUES

PROGRAM AT A GLANCE BASIC COURSE

The basic three-days lasting workshop is grounded on sessions inside the surgical theatre, theoretical lessons and practical caveric dissection. After the presentation of the daily clinical cases, participants will access the surgical theaters and debate the surgical procedures directly with the tutors. Lectures will relate to sinonasal surgical anatomy (macroscopic, endoscopic, 3D and radiologic), medical and surgical indications, making use of the precious support given by specialists from other disciplines. Afternoon sessions of step-by-step tutor-guided anatomical dissection complete the course. Furthermore, as the experience is basal, it is addressed to ENT specialists or residents who desire to deepen their knowledge on treatment of sinonasal inflammatory pathology and some other specific aspects such as particular techniques and the management of possible complications..

FIRST DAY

07:00 - Registration of participants
07:15 - Description of clinical cases
08:15 - Surgical anatomy of the sinonasal complex - FESS
08:30 - Live surgery & debate
13:00 - LUNCH
13:30 - Imaging: Radiological anatomy of the sinonasal structures
14:00 - Video-guided step-by-step dissection
Endoscopic sinus surgery: identification of main surgical landmarks
Sinus Ballooning
Anterior sinus compartment surgery: uncinotomy, access to frontal sinus
Draf typee I and II
Bimanual access to maxillary sinus (canine fossa approach)
18:00 - Panel discussion (*Faculty-Tutors*)
18:30 - First Day closing remarks

SECOND DAY

07:15 - Clinical cases presentation
08:15 - Specific techniques: DCR, orbit and optic nerve decompression, treatment for choanal atresia
08:30 - Live surgery & debate
13:00 - LUNCH
13:30 - Imaging: differential diagnosis between sinonasal lesions
14:00 - Video-guided step-by-step dissection
Surgical approach to posterior sinus compartment, sphenoidotomies: parasseptal and transtethmoidal
Optic nerve decompression
Orbit decompression
18:00 - Panel discussion (*Faculty - Tutors*)
18:30 - First day closing remarks

THIRD DAY

07:15 - Clinical cases presentation
08:15 - Diagnosis & management of sinonasal complications
08:30 - Live surgery & debate 1
13:00 - LUNCH
13:30 - Imaging: CSF-Leaks diagnostics 1
14:00 - Video-guided step-by-step dissection
Medial maxillectomy
Pterigo-palatine fossa
Spheno-palatine complex and MIA
Hadad nasoseptal flap and dura plasty
17:30 - Panel discussion (*Faculty - Tutors*)
18:00 - Filling of the CME test
18:30 - Take home message & closing remarks



SINUS & SKULL BASE SURGERY: ANATOMICAL DISSECTION, DIAGNOSTICS AND OPERATIVE TECHNIQUES

PROGRAM AT A GLANCE ADVANCED COURSE

The advanced three-days lasting workshop is grounded on sessions inside the surgical theatre, theoretical lessons and anatomical dissection. After the presentation of the daily clinical cases, participants will access the surgical theaters and debate the surgical procedures directly with the tutors. Magistral lectures and round tables will relate on sinonasal 3D anatomy, medical and surgical indications, making use of the precious support given by specialists from other disciplines. Afternoon sessions of step-by-step tutor-guided anatomical dissection complete the course. Furthermore, as the experience is advanced, it is addressed to medical doctors dealing with skull base pathology (ENT, neurosurgeons, maxillo-facial specialists and residents) who desire to deepen their knowledge of the endoscopic endonasal technique.

FIRST DAY:

07:00 - Registration of participants
07:15 - Presentation of clinical cases
08:15 - Surgical anatomy of the skull base
08:30 - Live surgery & debate
13:00 - LUNCH
13:30 - Imaging: radiological anatomy of the skull base
14:00 - Video-guided step-by-step dissection
Parasseptal sphenoidotomy with SPA's septal branch conservation and medial approach to the pituitary gland
Endoscopic Endonasal Craniectomy (EEC): Nasal septum resection, Frontal sinusotomy (Draf III type) and debulking
Centripetal removal and craniectomy
Skull base reconstruction
16:00 - 3D Vision of skull base anatomical structures
18:00 - Panel Discussion (*Faculty-Tutors*)
18:30 - Closing Remarks

SECOND DAY:

07:15 - Description of clinical cases
08:15 - Anatomy of the infratemporal fossa and parapharyngeal spaces
08:30 - Live surgery & debate
13:00 - LUNCH
13:30 - Imaging: Differential diagnosis between skull-base lesions
14:00 - Video-guided step-by-step dissection
Transtethmoidal-pterygoid-sphenoidal approach (TEPSA) and Hadad nasoseptal flap
Optic nerve decompression
Sella, parasella and cavernous sinus
Clivus, posterior cranial fossa and odontoid process
16:00 - Pathological anatomy in skull base diseases
18:00 - Panel discussion (*Faculty - Tutors*)
18:30 - First day closing remarks

THIRD DAY:

07:15 - Description of clinical cases
08:15 - Diagnosis & management of sinonasal complications
08:30 - Live surgery & debate
13:00 - LUNCH
13:30 - Imaging: vascular radiological anatomy and radiological endoluminal procedures in skull base diseases
14:00 - Video-guided step-by-step dissection
Medial maxillectomy
Transantral and infratemporal approaches
Endonasal nasopharyngectomy and ICA's anatomy
16:00 - The role of occupational medicine
17:30 - Panel discussion (*Faculty - Tutors*)
18:00 - Filling of the CME test
18:30 - Take-home message and closing remarks

* Eventual changes in the programme and Tutors may take place.